

## Hybrid Multimedia Room — System User Instructions

### POWER ON/OFF

To begin using the system, select the **PWR** button.

**Note:** **PWR** button will blink to confirm selection while powering up and powering down.


The button will stop blinking when system is ready for use.

(Source buttons will light to confirm selections.)

When the power light remains solid, the system is ready for use.

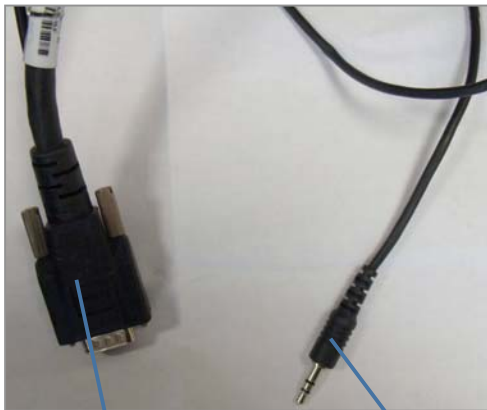
To turn system off later, simply select the **PWR** button again.

### CONNECTING TO THE DESKTOP COMPUTER

To use the computer, push the power button  and select the **COMP** button on the control panel. Once this is done the computer power button should light up green and you should see the computer boot up screen displayed on the projector.



After the computer finishes booting up, the desktop will be displayed on the screen and you will have full use of the computer.



### CONNECTING TO A LAPTOP

Using the VGA cable provided, connect your laptop to the system. Make sure the **COMP** button on the control panel is selected and power on your laptop.

Once the laptop is on, its signal will automatically override the built-in computer signal and you will be able to see the laptop screen through the projector.

If the projector is not showing the laptop screen, confirm that the laptop is set to display external video (depress key combination Fn + F8 on most Adelphi laptops; Fn + F5 on HPs).



**Note:** If you need to play audio from your laptop, plug the provided audio cable in the headphone jack on your

laptop.

### PLAYING A VHS TAPE

To play a VHS tape you must contact Customer Services or [nonprint@adelphi.edu](mailto:nonprint@adelphi.edu) (at least 2 days prior to needing the equipment) in order for them to allocate a player to you.



Once you have a VHS player, connect the yellow, red, and white cables to the back of the VHS player to the auxiliary inputs on the box next to the control panel and follow the aux directions.

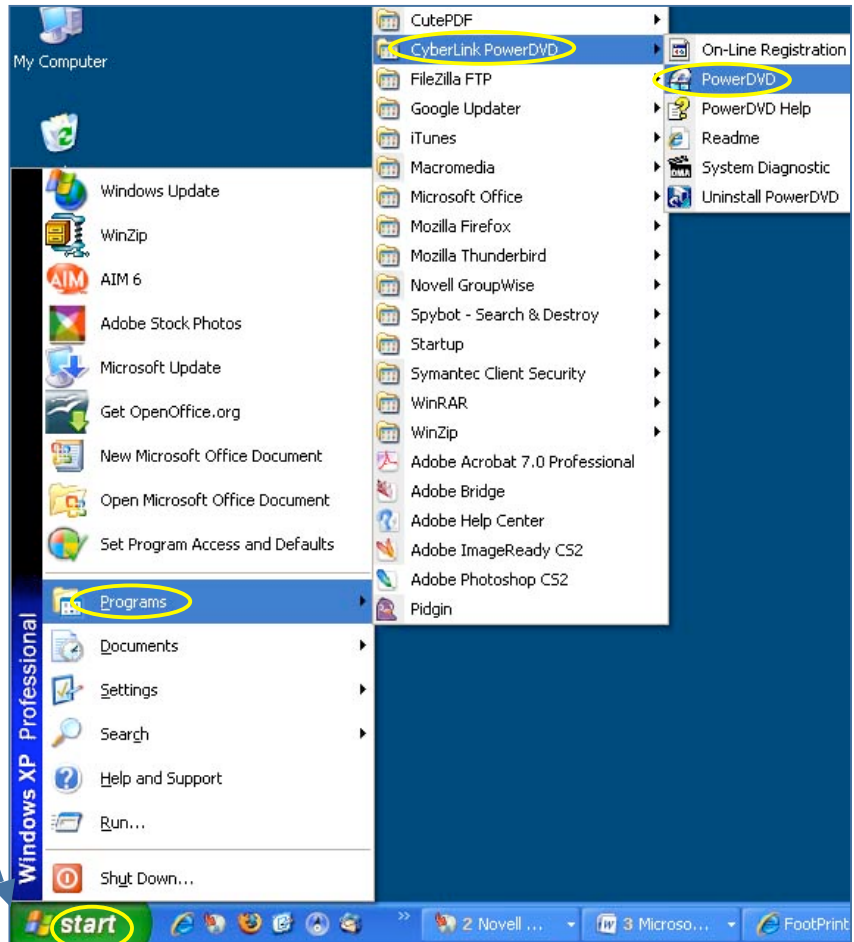
### SUPPORT

Call Adelphi University Customer Services at ext. 3340 or email [nonprint@adelphi.edu](mailto:nonprint@adelphi.edu).

### PLAYING A DVD DISC

To play a DVD, insert the disc into the DVD-ROM drive on the computer.

Go to the **Start** menu on the computer and select **Programs > Cyberlink PowerDVD > PowerDVD** to view and display the contents of the disc.



### USING AN AUX VIDEO SOURCE

To display an auxiliary video source, select the **AUX** button.

The source you have connected to the AUX plate at the interface will be displayed on the projection screen.

### VOLUME

**MUTE** temporarily turns off all program audio.

When depressed a second time or when the volume up or down buttons are pressed, audio will return to its previous level.



### SHUTTING DOWN

Remember to Power Off the computer and projector (press **PWR**) when the class is complete. Also shut down any auxiliary equipment you are using. Return any equipment you may have borrowed from Customer Services.

### SUPPORT

Call Adelphi University Customer Services at ext. 3340 or email [nonprint@adelphi.edu](mailto:nonprint@adelphi.edu).